

IPA RESEARCH NOTE

The Growth and Distribution of Welfare in Australia

April 2024

Saxon Davidson **Daniel Wild**
Research Fellow *Deputy Executive Director*

Headline findings

- Approximately 2.1 million Australians (aged 15 and over) are currently receiving welfare through either the National Disability Insurance Scheme (NDIS), Disability Support Pension (DSP), Jobseeker, or Youth Allowance. This is approximately 425,000 higher than in 2018, before the NDIS was implemented in full and before the Covid lockdowns.
- Approximately 86% of the growth to the total number of people on welfare since 2018 is from the NDIS.
- From 2013 to 2018, the total number on welfare declined by around 115,000, which is around 23,000 per year on average. If this trend had continued until 2023, there would be around 1.5 million on welfare, instead of 2.1 million, a difference of 600,000.
- There are 190,000 more Australians aged 65 and over who are receiving non-pension welfare than in 2013—an increase of over 500%—from 34,000 to 225,000.
- All up, 61% of increase to welfare since 2013 is from those aged 65 and over.

Table 1: Percentage of total population on welfare—including NDIS, DSP, Jobseeker, or Youth Allowance (does not include age pension)

	NSW	VIC	QLD	SA	TAS	WA	AUS
2013	7.7%	7.8%	7.9%	9.5%	11.4%	5.7%	7.8%
2014	7.7%	7.7%	8.1%	9.6%	11.4%	5.8%	7.8%
2015	7.3%	7.4%	8.1%	9.6%	11.2%	6.0%	7.6%
2016	6.9%	7.0%	7.9%	9.3%	11.0%	6.4%	7.3%
2017	6.6%	6.7%	7.7%	9.0%	10.7%	6.5%	7.1%
2018	6.3%	6.3%	7.3%	8.6%	10.1%	6.3%	6.7%
2019	7.1%	6.9%	8.0%	9.4%	10.7%	6.7%	7.5%
2020	9.8%	10.3%	11.0%	12.2%	13.1%	9.2%	10.4%
2021	8.4%	8.3%	9.1%	10.5%	11.4%	7.4%	8.7%
2022	7.8%	7.7%	8.7%	10.2%	11.3%	7.1%	8.2%
2023	7.6%	7.5%	8.4%	9.9%	11.0%	6.8%	7.9%

Table 2: Number of people on welfare—including NDIS, DSP, Jobseeker, or Youth Allowance (does not include age pension)

	NSW	VIC	QLD	SA	TAS	WA	AUS
2013	576,540	452,357	370,139	159,986	58,277	141,971	1,810,235
2014	580,969	459,596	384,899	162,852	58,356	146,929	1,846,169
2015	560,004	450,236	387,042	163,237	57,627	153,876	1,824,847
2016	536,248	436,839	386,202	160,230	57,198	163,230	1,791,205
2017	520,917	425,295	379,979	156,050	56,698	167,732	1,757,796
2018	500,947	405,253	368,947	150,623	54,609	165,371	1,695,853
2019	570,919	456,157	410,648	168,069	59,425	180,862	1,903,150
2020	793,266	675,914	572,469	218,762	73,447	251,235	2,658,145
2021	680,363	544,701	480,406	189,124	65,077	205,641	2,231,830
2022	647,492	514,885	467,104	186,411	64,790	199,889	2,147,345
2023	635,282	512,425	462,377	184,097	62,843	198,167	2,121,626

Chart 1: Percentage of total population on welfare—including NDIS, DSP, Jobseeker, or Youth Allowance (does not include age pension)

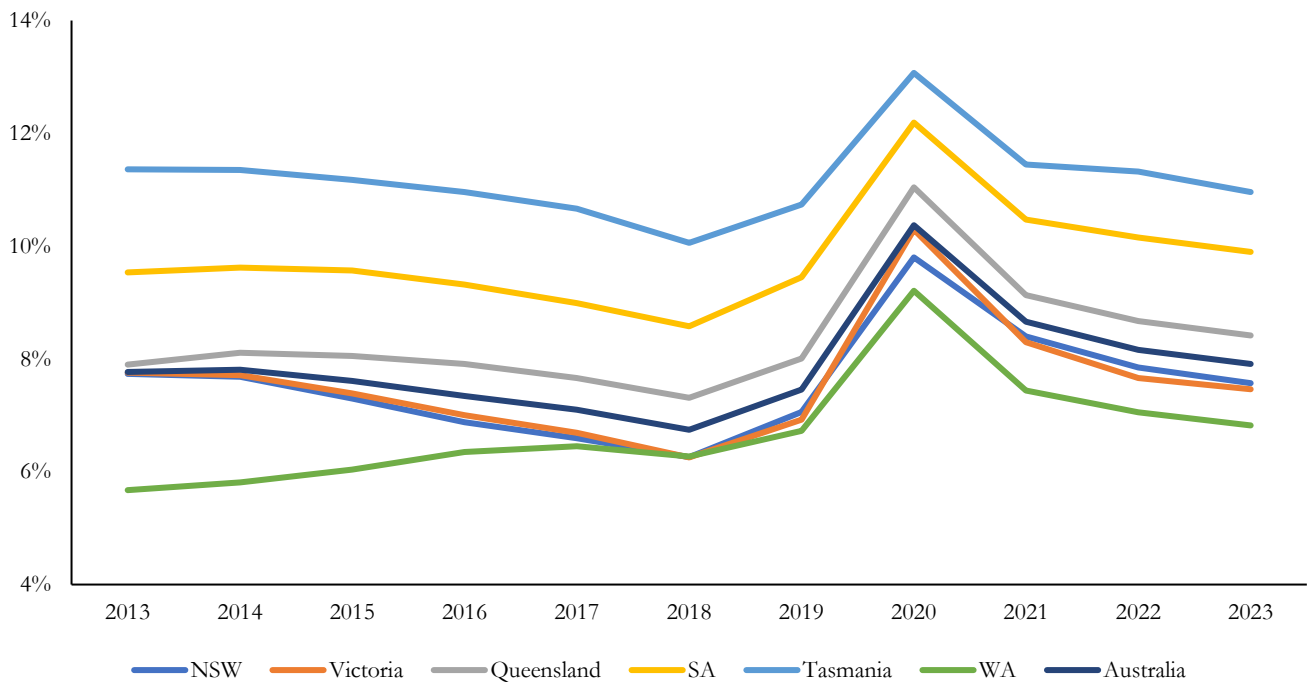


Chart 2: Number of people on welfare—including NDIS, DSP, Jobseeker, or Youth Allowance (does not include age pension)

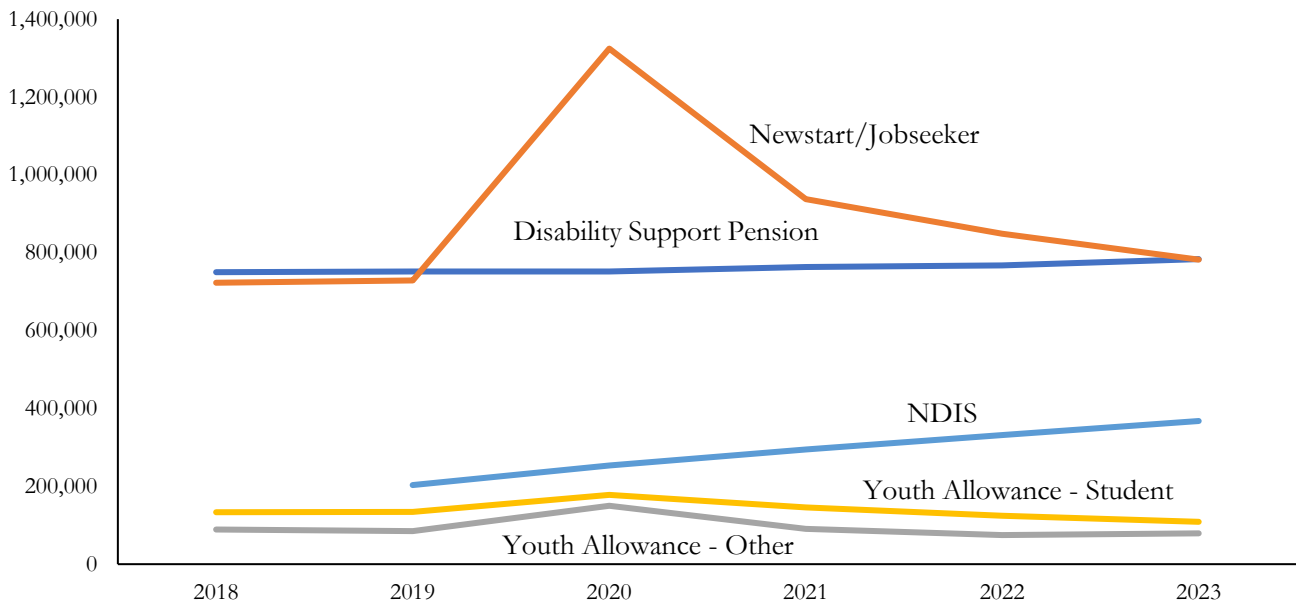
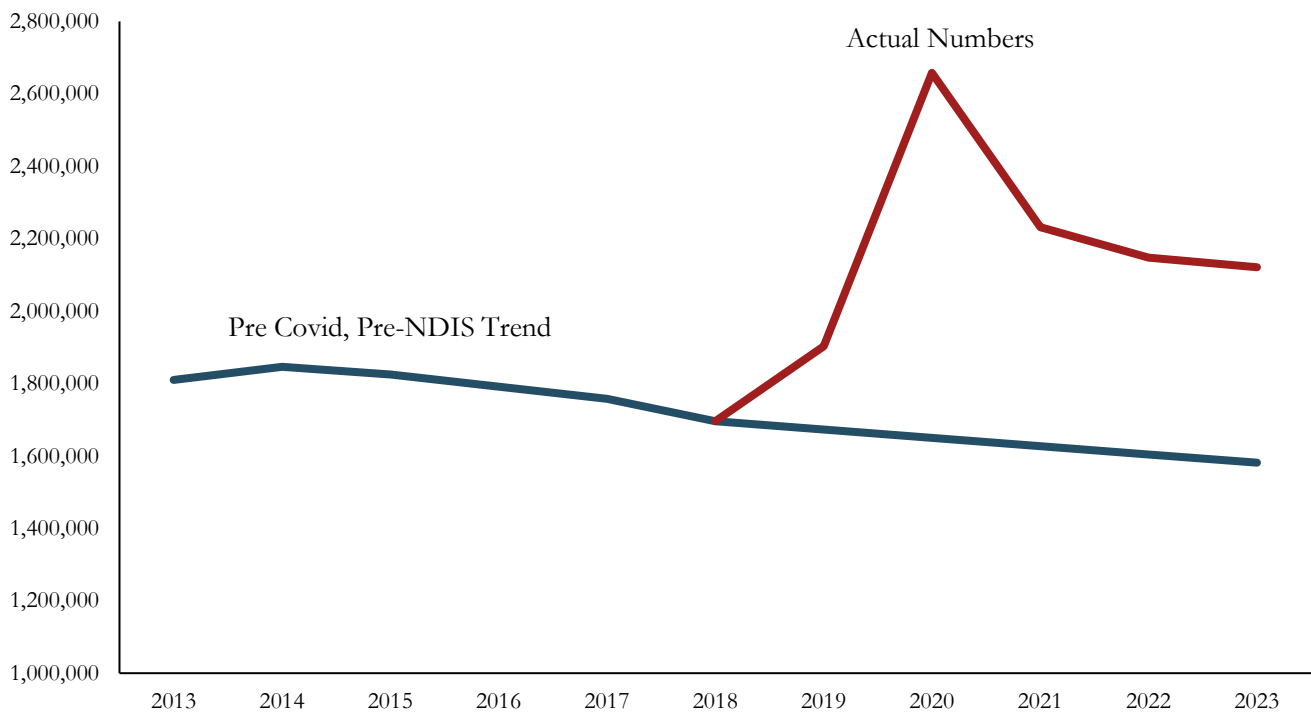
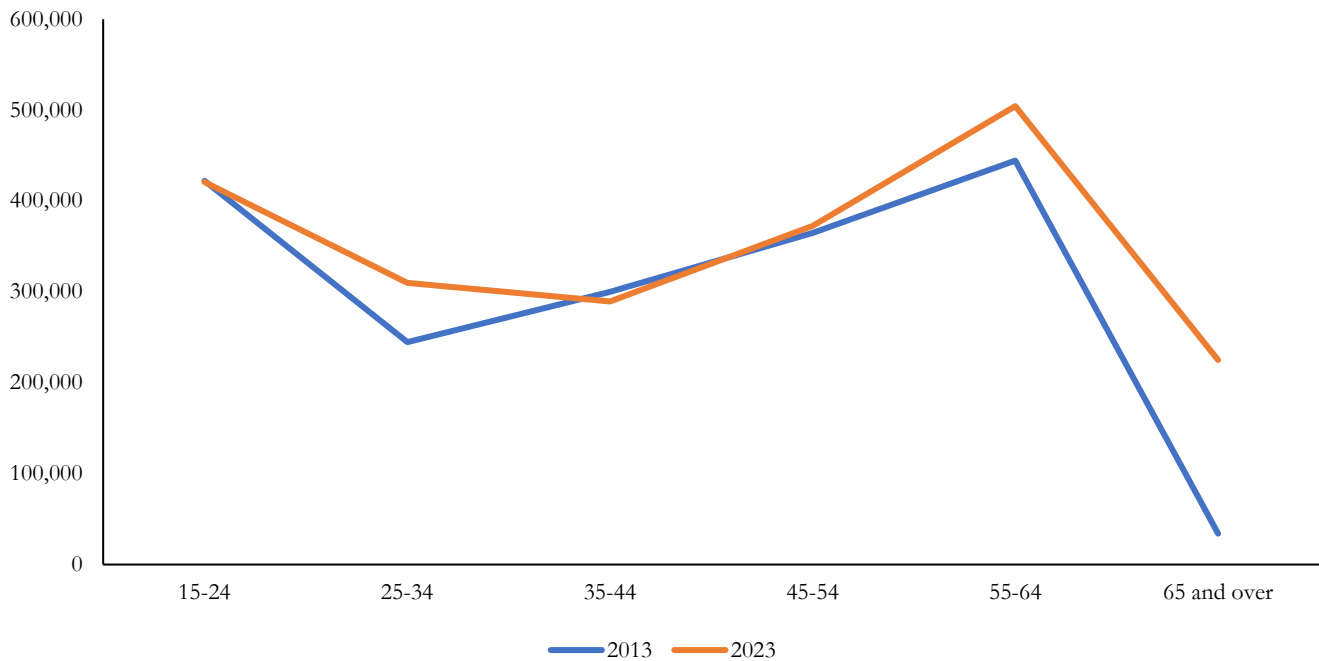


Chart 3: Total number of Australians on welfare



Age breakdown

Chart 4: Number of working age Australians receiving welfare by age, 2013 compared with 2023



- There are 311,000 more Australians on welfare compared to 2023.
- There are 190,000 more Australians aged 65 and over who are receiving non-pension welfare than in 2013—an increase of over 500 per cent—from 34,000 to 225,000.
- All up, 61 per cent of the increase to welfare since 2013 is from those aged 65 and over.

Local government breakdown

Table 2: *New South Wales local government area breakdown, 2019 to 2023*

LGA name	State	2019	2020	2021	2022	2023
Albury	NSW	9.6%	11.8%	13.0%	12.5%	12.4%
Armidale	NSW	11.4%	13.5%	13.4%	13.3%	13.6%
Ballina	NSW	7.5%	10.0%	10.4%	10.1%	10.0%
Balranald	NSW	5.7%	7.4%	8.2%	8.7%	8.9%
Bathurst	NSW	7.9%	9.4%	11.0%	10.7%	10.4%
Bayside (NSW)	NSW	4.1%	7.3%	6.9%	6.4%	6.0%
Bega Valley	NSW	8.7%	10.8%	11.3%	10.7%	10.6%
Bellingen	NSW	9.9%	13.3%	13.6%	13.1%	12.7%
Berrigan	NSW	7.2%	9.3%	10.0%	10.0%	9.9%
Blacktown	NSW	6.1%	9.0%	9.1%	8.8%	8.6%
Bland	NSW	6.2%	7.3%	7.8%	7.8%	7.6%
Blayney	NSW	6.5%	8.1%	8.7%	8.1%	7.9%
Blue Mountains	NSW	5.5%	7.4%	8.5%	8.2%	8.2%
Bogan	NSW	7.4%	9.0%	9.8%	10.7%	11.0%
Bourke	NSW	13.4%	19.0%	20.9%	23.3%	22.8%
Brewarrina	NSW	19.0%	22.0%	22.8%	22.5%	24.8%
Broken Hill	NSW	13.5%	15.7%	16.9%	16.8%	17.2%
Burwood	NSW	3.8%	6.5%	6.1%	5.6%	5.3%
Byron	NSW	9.8%	15.1%	12.5%	11.4%	11.0%
Cabonne	NSW	5.5%	6.7%	7.2%	7.1%	7.0%
Camden	NSW	3.2%	5.5%	6.1%	5.8%	5.8%
Campbelltown (NSW)	NSW	7.7%	11.3%	11.8%	11.4%	11.1%
Canada Bay	NSW	2.3%	4.4%	4.3%	3.9%	4.0%
Canterbury-Bankstown	NSW	6.8%	10.9%	10.6%	10.2%	9.8%
Carrathool	NSW	5.5%	6.9%	6.8%	7.0%	6.3%
Central Coast (NSW)	NSW	7.7%	10.4%	11.1%	10.7%	10.6%
Central Darling	NSW	17.6%	21.6%	22.7%	23.2%	23.7%
Cessnock	NSW	10.4%	12.4%	13.8%	13.1%	12.8%
Clarence Valley	NSW	12.3%	15.0%	15.2%	14.8%	14.6%
Cobar	NSW	6.8%	9.1%	8.7%	8.9%	9.0%
Coffs Harbour	NSW	10.0%	12.7%	13.2%	12.6%	12.3%
Coolamon	NSW	6.7%	8.5%	9.3%	9.2%	9.1%
Coonamble	NSW	13.9%	16.8%	19.1%	19.1%	18.8%
Cootamundra-Gundagai	NSW	8.5%	10.0%	11.4%	11.1%	10.7%
Cowra	NSW	11.4%	13.1%	14.1%	14.1%	13.8%
Cumberland	NSW	6.8%	10.8%	10.6%	10.2%	9.9%
Dubbo	NSW	8.5%	10.3%	11.2%	11.3%	11.1%
Dungog	NSW	7.5%	9.3%	10.1%	9.9%	9.6%
Edward River	NSW	9.6%	11.6%	12.8%	12.4%	12.1%
Eurobodalla	NSW	10.6%	12.8%	13.0%	12.3%	12.2%
Fairfield	NSW	11.1%	15.3%	14.8%	14.5%	14.0%
Federation	NSW	7.8%	9.5%	10.2%	9.9%	9.8%
Forbes	NSW	8.0%	9.6%	10.6%	11.7%	10.4%
Georges River	NSW	3.6%	6.5%	6.5%	6.1%	5.8%
Gilgandra	NSW	11.4%	13.0%	14.5%	14.2%	14.0%
Glen Innes Severn	NSW	13.8%	15.7%	16.8%	16.7%	16.3%
Goulburn Mulwaree	NSW	7.7%	9.6%	11.5%	11.0%	11.2%
Greater Hume	NSW	5.9%	7.0%	8.3%	8.1%	8.5%

Griffith	NSW	5.9%	7.1%	7.8%	7.7%	7.7%
Gunnedah	NSW	8.7%	9.9%	10.8%	10.9%	10.3%
Gwydir	NSW	10.1%	12.3%	12.7%	12.8%	11.9%
Hawkesbury	NSW	5.0%	7.0%	7.7%	7.6%	7.4%
Hay	NSW	7.7%	9.4%	10.0%	9.8%	9.6%
Hilltops	NSW	9.0%	10.7%	11.8%	11.7%	11.6%
Hornsby	NSW	2.7%	4.5%	4.8%	4.6%	4.6%
Hunters Hill	NSW	2.7%	4.0%	4.5%	4.2%	4.1%
Inner West	NSW	4.5%	7.4%	7.1%	6.7%	6.6%
Inverell	NSW	10.5%	12.3%	14.6%	14.5%	14.2%
Junee	NSW	7.1%	8.6%	9.2%	9.3%	9.7%
Kempsey	NSW	14.5%	17.1%	18.4%	18.1%	17.9%
Kiama	NSW	3.5%	4.8%	5.0%	4.8%	4.7%
Ku-ring-gai	NSW	1.3%	2.8%	2.9%	2.8%	2.8%
Kyogle	NSW	15.4%	17.8%	19.1%	18.1%	17.5%
Lachlan	NSW	9.2%	10.8%	12.0%	12.7%	12.0%
Lake Macquarie	NSW	7.5%	9.5%	11.0%	10.6%	10.5%
Lane Cove	NSW	1.6%	3.4%	3.3%	3.0%	3.1%
Leeton	NSW	7.8%	9.3%	9.9%	10.0%	10.2%
Lismore	NSW	12.8%	15.8%	17.0%	16.1%	15.5%
Lithgow	NSW	10.5%	12.4%	13.4%	13.4%	13.4%
Liverpool	NSW	7.6%	11.3%	11.2%	10.8%	10.5%
Liverpool Plains	NSW	10.6%	12.3%	13.6%	13.3%	13.3%
Lockhart	NSW	6.5%	8.2%	9.8%	9.3%	9.4%
Maitland	NSW	7.8%	9.8%	12.0%	11.7%	11.5%
Mid-Coast	NSW	11.8%	13.8%	14.6%	14.2%	13.8%
Mid-Western	NSW	7.9%	9.6%	10.4%	9.9%	9.7%
Moree Plains	NSW	11.4%	13.6%	14.1%	15.2%	13.7%
Mosman	NSW	1.2%	2.8%	2.6%	2.4%	2.2%
Murray River	NSW	5.6%	7.4%	7.5%	7.4%	6.7%
Murrumbidgee	NSW	6.8%	9.2%	9.9%	9.4%	9.8%
Muswellbrook	NSW	9.1%	11.1%	12.8%	12.9%	12.8%
Nambucca Valley	NSW	14.0%	16.7%	17.3%	16.5%	16.3%
Narrabri	NSW	9.4%	10.8%	11.6%	11.9%	11.2%
Narrandera	NSW	10.1%	12.6%	13.4%	13.3%	13.1%
Narromine	NSW	9.1%	11.1%	11.9%	12.1%	11.0%
Newcastle	NSW	9.5%	11.8%	13.1%	12.5%	12.0%
North Sydney	NSW	1.7%	3.6%	3.3%	3.0%	2.9%
Northern Beaches	NSW	2.1%	4.0%	3.9%	3.7%	3.7%
Oberon	NSW	6.3%	8.0%	8.4%	8.3%	7.8%
Orange	NSW	8.4%	10.1%	11.4%	11.3%	11.2%
Parkes	NSW	9.4%	11.3%	12.4%	12.4%	11.8%
Parramatta	NSW	3.9%	6.7%	6.6%	6.1%	6.0%
Penrith	NSW	6.1%	8.9%	9.7%	9.4%	9.4%
Port Macquarie-Hastings	NSW	9.0%	11.1%	12.2%	11.9%	11.7%
Port Stephens	NSW	8.1%	10.6%	11.6%	11.0%	11.0%
Queanbeyan-Palerang	NSW	3.8%	5.4%	6.2%	5.9%	5.9%
Randwick	NSW	3.6%	5.9%	6.3%	5.9%	5.7%
Richmond Valley	NSW	12.2%	14.5%	15.7%	15.5%	14.9%
Ryde	NSW	3.3%	5.7%	5.9%	5.5%	5.4%
Shellharbour	NSW	8.0%	10.4%	10.9%	10.4%	10.3%
Shoalhaven	NSW	9.3%	11.1%	11.8%	11.3%	11.3%
Singleton	NSW	6.3%	7.9%	8.9%	8.9%	9.0%

Snowy Monaro	NSW	6.0%	8.2%	8.0%	7.3%	6.8%
Snowy Valleys	NSW	7.9%	9.1%	10.3%	9.9%	9.6%
Strathfield	NSW	3.3%	6.2%	5.7%	5.2%	5.0%
Sutherland	NSW	2.7%	4.6%	4.9%	4.7%	4.8%
Sydney	NSW	4.6%	7.5%	7.4%	6.8%	6.2%
Tamworth	NSW	8.8%	10.7%	12.1%	11.8%	11.7%
Temora	NSW	7.1%	8.2%	9.7%	9.7%	9.8%
Tenterfield	NSW	14.5%	16.7%	17.7%	17.0%	16.5%
The Hills	NSW	2.0%	3.9%	3.9%	3.7%	3.7%
Tweed	NSW	9.3%	12.4%	12.1%	11.3%	11.0%
Upper Hunter	NSW	6.2%	7.7%	8.4%	8.2%	8.4%
Upper Lachlan	NSW	5.7%	7.0%	7.4%	7.4%	7.3%
Uralla	NSW	7.7%	9.6%	10.1%	9.9%	10.1%
Wagga Wagga	NSW	8.0%	9.5%	10.7%	10.5%	10.6%
Walcha	NSW	7.7%	9.1%	9.7%	9.0%	9.0%
Walgett	NSW	21.5%	24.3%	25.5%	26.6%	24.6%
Warren	NSW	10.0%	11.4%	12.9%	13.6%	12.4%
Warrumbungle	NSW	11.1%	13.2%	14.9%	14.9%	15.0%
Waverley	NSW	2.2%	4.5%	3.9%	3.5%	3.5%
Weddin	NSW	9.3%	10.6%	11.5%	11.7%	11.5%
Wentworth	NSW	9.4%	11.2%	12.0%	11.5%	11.3%
Willoughby	NSW	1.8%	3.7%	3.6%	3.4%	3.3%
Wingecarribee	NSW	4.5%	6.3%	6.7%	6.4%	6.3%
Wollondilly	NSW	3.7%	5.6%	6.3%	6.2%	6.0%
Wollongong	NSW	8.3%	10.7%	11.1%	10.8%	10.6%
Woollahra	NSW	1.4%	3.4%	2.9%	2.6%	2.6%
Yass Valley	NSW	3.6%	4.7%	5.9%	5.6%	5.7%

Table 3: *Victoria local government area breakdown, 2019 to 2023*

LGA name	State	2019	2020	2021	2022	2023
Alpine	VIC	5.6%	8.5%	7.6%	7.0%	6.6%
Ararat	VIC	10.5%	12.3%	14.2%	13.7%	13.9%
Ballarat	VIC	9.8%	12.4%	12.8%	12.5%	12.4%
Banyule	VIC	5.1%	7.6%	7.9%	7.5%	7.7%
Bass Coast	VIC	8.9%	11.7%	10.9%	10.3%	9.9%
Baw Baw	VIC	6.7%	9.0%	9.4%	9.1%	9.2%
Bayside (Vic.)	VIC	2.7%	4.7%	4.5%	4.2%	4.2%
Benalla	VIC	9.3%	11.4%	12.4%	12.7%	12.5%
Boroondara	VIC	2.7%	4.8%	4.6%	4.3%	4.3%
Brimbank	VIC	8.5%	13.1%	12.4%	11.8%	11.5%
Buloke	VIC	9.4%	11.0%	12.4%	12.7%	12.5%
Campaspe	VIC	8.5%	11.0%	11.9%	12.5%	11.5%
Cardinia	VIC	5.0%	8.0%	7.7%	7.3%	7.4%
Casey	VIC	5.8%	9.5%	8.7%	8.2%	8.4%
Central Goldfields	VIC	15.2%	18.2%	19.0%	18.7%	18.4%
Colac Otway	VIC	8.0%	10.4%	11.5%	11.4%	11.1%
Corangamite	VIC	8.1%	9.9%	10.8%	10.7%	10.5%
Darebin	VIC	7.0%	10.6%	10.4%	9.8%	9.6%
East Gippsland	VIC	10.3%	12.7%	13.3%	13.1%	13.1%
Frankston	VIC	7.7%	11.2%	11.4%	11.0%	11.0%
Gannawarra	VIC	9.1%	11.7%	12.1%	12.0%	11.6%
Glen Eira	VIC	3.4%	5.9%	5.8%	5.5%	5.4%
Glenelg	VIC	10.2%	12.8%	13.3%	13.0%	12.9%
Golden Plains	VIC	5.1%	7.3%	7.8%	7.5%	7.6%
Greater Bendigo	VIC	9.5%	11.9%	13.1%	12.8%	12.7%
Greater Dandenong	VIC	8.5%	12.8%	12.0%	11.5%	11.3%
Greater Geelong	VIC	7.7%	10.3%	11.2%	10.8%	10.7%
Greater Shepparton	VIC	10.0%	12.3%	13.1%	13.6%	12.9%
Hepburn	VIC	8.4%	11.5%	10.4%	9.8%	9.6%
Hindmarsh	VIC	9.9%	11.5%	12.5%	12.4%	12.6%
Hobsons Bay	VIC	5.6%	8.4%	8.4%	8.0%	7.9%
Horsham	VIC	8.4%	10.1%	11.6%	11.6%	11.3%
Hume	VIC	8.6%	12.8%	12.3%	11.7%	11.6%
Indigo	VIC	5.3%	7.3%	7.4%	7.4%	7.4%
Kingston (Vic.)	VIC	4.6%	7.2%	7.2%	6.8%	6.8%
Knox	VIC	5.0%	8.0%	7.9%	7.5%	7.5%
Latrobe (Vic.)	VIC	12.5%	15.3%	16.4%	16.1%	16.1%
Loddon	VIC	12.2%	15.0%	15.2%	14.9%	14.9%
Macedon Ranges	VIC	3.7%	5.7%	6.2%	6.1%	6.2%
Manningham	VIC	3.1%	6.0%	5.5%	5.1%	4.9%
Mansfield	VIC	4.8%	7.5%	6.7%	6.4%	6.1%
Maribyrnong	VIC	7.1%	11.0%	10.5%	10.3%	9.7%
Maroondah	VIC	5.4%	8.1%	8.5%	8.3%	8.2%
Melbourne	VIC	3.5%	7.1%	7.7%	6.6%	5.8%
Melton	VIC	6.3%	9.9%	9.7%	9.2%	9.2%
Mildura	VIC	9.9%	12.5%	13.5%	13.4%	13.1%
Mitchell	VIC	6.8%	9.9%	9.6%	9.1%	9.2%
Moira	VIC	8.9%	10.9%	11.6%	11.4%	11.0%
Monash	VIC	3.8%	6.6%	6.4%	5.8%	5.5%
Moonee Valley	VIC	4.7%	7.6%	7.3%	7.0%	7.0%

Moorabool	VIC	5.6%	8.1%	8.4%	8.1%	8.1%
Moreland	VIC	6.1%	9.9%	9.3%	8.6%	8.5%
Mornington Peninsula	VIC	5.4%	8.0%	7.9%	7.6%	7.7%
Mount Alexander	VIC	7.7%	10.2%	10.2%	9.8%	9.9%
Moynes	VIC	6.0%	7.8%	8.1%	7.6%	7.5%
Murrindindi	VIC	7.3%	10.2%	9.5%	9.2%	9.1%
Nillumbik	VIC	2.8%	4.8%	5.2%	5.0%	5.2%
Northern Grampians	VIC	12.2%	13.6%	14.7%	14.4%	14.2%
Port Phillip	VIC	5.4%	8.9%	8.6%	8.1%	7.6%
Pyrenees	VIC	10.9%	12.8%	12.8%	12.2%	11.9%
Queenscliffe	VIC	3.6%	4.7%	4.4%	4.1%	4.4%
South Gippsland	VIC	6.6%	9.1%	9.3%	9.1%	9.1%
Southern Grampians	VIC	8.2%	10.1%	11.1%	11.0%	10.9%
Stonnington	VIC	3.1%	6.0%	5.4%	4.9%	4.7%
Strathbogie	VIC	7.4%	9.6%	9.6%	9.1%	8.9%
Surf Coast	VIC	3.4%	5.8%	5.1%	4.5%	4.6%
Swan Hill	VIC	8.2%	10.1%	10.8%	11.0%	10.8%
Towong	VIC	7.7%	9.6%	9.9%	9.6%	9.5%
Wangaratta	VIC	8.0%	10.0%	11.2%	11.0%	11.1%
Warrnambool	VIC	8.5%	10.8%	11.9%	11.7%	11.6%
Wellington	VIC	9.0%	11.2%	11.9%	11.6%	11.6%
West Wimmera	VIC	8.1%	9.8%	9.9%	10.0%	10.0%
Whitehorse	VIC	4.0%	6.6%	6.8%	6.4%	6.1%
Whittlesea	VIC	6.4%	10.0%	9.4%	9.0%	8.9%
Wodonga	VIC	8.4%	10.9%	12.2%	12.3%	12.1%
Wyndham	VIC	4.7%	8.3%	7.8%	7.4%	7.5%
Yarra	VIC	6.3%	9.9%	9.0%	8.3%	7.8%
Yarra Ranges	VIC	5.3%	7.9%	8.2%	7.8%	7.9%
Yarriambiack	VIC	12.0%	13.7%	15.9%	15.9%	15.7%

Table 4: *Welfare breakdown by LGA, by state, for year 2023*

LGA name	State	Share on welfare	Total LGA population	Total LGA on welfare
Albury	NSW	12.4%	57,517	7,107
Armidale	NSW	13.6%	29,594	4,013
Ballina	NSW	10.0%	47,279	4,743
Balranald	NSW	8.9%	2,202	197
Bathurst	NSW	10.4%	44,612	4,624
Bayside (NSW)	NSW	6.0%	182,987	11,057
Bega Valley	NSW	10.6%	36,279	3,841
Bellingen	NSW	12.7%	13,231	1,679
Berrigan	NSW	9.9%	8,643	857
Blacktown	NSW	8.6%	426,202	36,476
Bland	NSW	7.6%	5,464	413
Blayney	NSW	7.9%	7,644	602
Blue Mountains	NSW	8.2%	78,446	6,420
Bogan	NSW	11.0%	2,420	266
Bourke	NSW	22.8%	2,365	539
Brewarrina	NSW	24.8%	1,411	350
Broken Hill	NSW	17.2%	17,624	3,032
Burwood	NSW	5.3%	42,498	2,237
Byron	NSW	11.0%	37,126	4,077
Cabonne	NSW	7.0%	13,880	971
Camden	NSW	5.8%	134,811	7,883
Campbelltown (NSW)	NSW	11.1%	184,784	20,540
Canada Bay	NSW	4.0%	91,385	3,616
Canterbury-Bankstown	NSW	9.8%	379,829	37,177
Carrathool	NSW	6.3%	2,765	174
Central Coast (NSW)	NSW	10.6%	351,934	37,228
Central Darling	NSW	23.7%	1,757	416
Cessnock	NSW	12.8%	67,591	8,660
Clarence Valley	NSW	14.6%	55,323	8,059
Cobar	NSW	9.0%	4,078	368
Coffs Harbour	NSW	12.3%	80,489	9,903
Coolamon	NSW	9.1%	4,549	415
Coonamble	NSW	18.8%	3,861	726
Cootamundra-Gundagai	NSW	10.7%	11,424	1,226
Cowra	NSW	13.8%	12,659	1,746
Cumberland	NSW	9.9%	245,323	24,239
Dubbo	NSW	11.1%	56,558	6,268
Dungog	NSW	9.6%	9,767	933
Edward River	NSW	12.1%	8,430	1,017
Eurobodalla	NSW	12.2%	40,912	5,002
Fairfield	NSW	14.0%	209,742	29,371
Federation	NSW	9.8%	12,939	1,265
Forbes	NSW	10.4%	9,300	968
Georges River	NSW	5.8%	158,051	9,110
Gilgandra	NSW	14.0%	4,309	604
Glen Innes Severn	NSW	16.3%	8,989	1,462
Goulburn Mulwaree	NSW	11.2%	32,710	3,668
Greater Hume	NSW	8.5%	11,445	970
Griffith	NSW	7.7%	27,132	2,091
Gunnedah	NSW	10.3%	13,280	1,367

Gwydir	NSW	11.9%	4,940	588
Hawkesbury	NSW	7.4%	68,156	5,066
Hay	NSW	9.6%	2,830	273
Hilltops	NSW	11.6%	19,255	2,231
Hornsby	NSW	4.6%	154,072	7,087
Hunters Hill	NSW	4.1%	14,036	577
Inner West	NSW	6.6%	188,325	12,372
Inverell	NSW	14.2%	18,059	2,571
Junee	NSW	9.7%	6,520	633
Kempsey	NSW	17.9%	31,453	5,638
Kiama	NSW	4.7%	23,002	1,081
Ku-ring-gai	NSW	2.8%	126,983	3,611
Kyogle	NSW	17.5%	9,468	1,661
Lachlan	NSW	12.0%	6,147	740
Lake Macquarie	NSW	10.5%	219,249	22,922
Lane Cove	NSW	3.1%	41,549	1,279
Leeton	NSW	10.2%	11,431	1,168
Lismore	NSW	15.5%	43,907	6,804
Lithgow	NSW	13.4%	20,724	2,780
Liverpool	NSW	10.5%	247,672	26,044
Liverpool Plains	NSW	13.3%	7,667	1,023
Lockhart	NSW	9.4%	3,396	318
Maitland	NSW	11.5%	95,957	11,028
Mid-Coast	NSW	13.8%	97,909	13,465
Mid-Western	NSW	9.7%	25,921	2,512
Moree Plains	NSW	13.7%	12,873	1,760
Mosman	NSW	2.2%	29,071	654
Murray River	NSW	6.7%	13,326	887
Murrumbidgee	NSW	9.8%	3,607	353
Muswellbrook	NSW	12.8%	16,778	2,155
Nambucca Valley	NSW	16.3%	20,774	3,384
Narrabri	NSW	11.2%	12,754	1,425
Narrandera	NSW	13.1%	5,692	746
Narromine	NSW	11.0%	6,443	711
Newcastle	NSW	12.0%	174,294	20,972
North Sydney	NSW	2.9%	72,014	2,123
Northern Beaches	NSW	3.7%	267,921	9,853
Oberon	NSW	7.8%	5,600	439
Orange	NSW	11.2%	44,244	4,938
Parkes	NSW	11.8%	14,256	1,687
Parramatta	NSW	6.0%	269,145	16,021
Penrith	NSW	9.4%	224,483	21,163
Port Macquarie-Hastings	NSW	11.7%	89,596	10,458
Port Stephens	NSW	11.0%	77,748	8,518
Queanbeyan-Palerang	NSW	5.9%	65,369	3,830
Randwick	NSW	5.7%	141,840	8,101
Richmond Valley	NSW	14.9%	23,705	3,532
Ryde	NSW	5.4%	135,716	7,336
Shellharbour	NSW	10.3%	79,738	8,180
Shoalhaven	NSW	11.3%	109,895	12,366
Singleton	NSW	9.0%	25,332	2,277
Snowy Monaro	NSW	6.8%	22,132	1,508
Snowy Valleys	NSW	9.6%	14,935	1,433

Strathfield	NSW	5.0%	47,824	2,394
Sutherland	NSW	4.8%	235,029	11,202
Sydney	NSW	6.2%	231,086	14,394
Tamworth	NSW	11.7%	65,246	7,629
Temora	NSW	9.8%	6,029	589
Tenterfield	NSW	16.5%	6,973	1,153
The Hills	NSW	3.7%	207,959	7,719
Tweed	NSW	11.0%	98,967	10,885
Upper Hunter	NSW	8.4%	14,338	1,202
Upper Lachlan	NSW	7.3%	8,706	639
Uralla	NSW	10.1%	6,047	613
Wagga Wagga	NSW	10.6%	68,716	7,289
Walcha	NSW	9.0%	2,968	268
Walgett	NSW	24.6%	5,519	1,358
Warren	NSW	12.4%	2,583	320
Warrumbungle	NSW	15.0%	9,228	1,380
Waverley	NSW	3.5%	71,414	2,483
Weddin	NSW	11.5%	3,616	417
Wentworth	NSW	11.3%	7,688	870
Willoughby	NSW	3.3%	77,874	2,596
Wingecarribee	NSW	6.3%	53,109	3,342
Wollondilly	NSW	6.0%	57,616	3,464
Wollongong	NSW	10.6%	219,141	23,202
Woollahra	NSW	2.6%	54,660	1,406
Yass Valley	NSW	5.7%	17,477	996
Unincorporated NSW	NSW	5.2%	1,013	53
Alpine	VIC	6.6%	13,182	864
Ararat	VIC	13.9%	11,683	1,622
Ballarat	VIC	12.4%	118,137	14,632
Banyule	VIC	7.7%	129,602	10,008
Bass Coast	VIC	9.9%	42,729	4,212
Baw Baw	VIC	9.2%	60,644	5,563
Bayside (Vic.)	VIC	4.2%	104,272	4,352
Benalla	VIC	12.5%	14,529	1,812
Boroondara	VIC	4.3%	174,537	7,462
Brimbank	VIC	11.5%	196,046	22,569
Buloke	VIC	12.5%	6,040	754
Campaspe	VIC	11.5%	38,299	4,417
Cardinia	VIC	7.4%	126,960	9,407
Casey	VIC	8.4%	392,110	32,751
Central Goldfields	VIC	18.4%	13,574	2,501
Colac Otway	VIC	11.1%	22,273	2,475
Corangamite	VIC	10.5%	15,948	1,675
Darebin	VIC	9.6%	155,683	14,983
East Gippsland	VIC	13.1%	49,179	6,465
Frankston	VIC	11.0%	142,826	15,767
Gannawarra	VIC	11.6%	10,420	1,204
Glen Eira	VIC	5.4%	156,837	8,442
Glenelg	VIC	12.9%	20,022	2,585
Golden Plains	VIC	7.6%	25,818	1,970
Greater Bendigo	VIC	12.7%	124,174	15,792
Greater Dandenong	VIC	11.3%	163,792	18,556
Greater Geelong	VIC	10.7%	282,809	30,222

Greater Shepparton	VIC	12.9%	69,135	8,905
Hepburn	VIC	9.6%	16,670	1,606
Hindmarsh	VIC	12.6%	5,559	700
Hobsons Bay	VIC	7.9%	93,738	7,427
Horsham	VIC	11.3%	20,315	2,291
Hume	VIC	11.6%	262,764	30,360
Indigo	VIC	7.4%	17,662	1,304
Kingston (Vic.)	VIC	6.8%	163,724	11,154
Knox	VIC	7.5%	161,766	12,158
Latrobe (Vic.)	VIC	16.1%	78,154	12,558
Loddon	VIC	14.9%	7,747	1,151
Macedon Ranges	VIC	6.2%	52,920	3,292
Manningham	VIC	4.9%	129,514	6,352
Mansfield	VIC	6.1%	10,546	648
Maribyrnong	VIC	9.7%	91,762	8,871
Maroondah	VIC	8.2%	117,434	9,686
Melbourne	VIC	5.8%	177,396	10,232
Melton	VIC	9.2%	206,070	19,026
Mildura	VIC	13.1%	57,554	7,558
Mitchell	VIC	9.2%	53,723	4,917
Moira	VIC	11.0%	30,775	3,371
Monash	VIC	5.5%	203,560	11,140
Moonee Valley	VIC	7.0%	126,486	8,892
Moorabool	VIC	8.1%	39,092	3,182
Moreland	VIC	8.5%	181,223	15,443
Mornington Peninsula	VIC	7.7%	170,243	13,192
Mount Alexander	VIC	9.9%	20,576	2,033
Moyne	VIC	7.5%	17,610	1,321
Murrindindi	VIC	9.1%	15,482	1,412
Nillumbik	VIC	5.2%	63,264	3,301
Northern Grampians	VIC	14.2%	11,879	1,687
Port Phillip	VIC	7.6%	109,515	8,363
Pyrenees	VIC	11.9%	7,786	925
Queenscliffe	VIC	4.4%	3,238	141
South Gippsland	VIC	9.1%	30,823	2,791
Southern Grampians	VIC	10.9%	16,470	1,799
Stonnington	VIC	4.7%	111,335	5,258
Strathbogie	VIC	8.9%	11,578	1,025
Surf Coast	VIC	4.6%	39,292	1,820
Swan Hill	VIC	10.8%	21,212	2,289
Towong	VIC	9.5%	6,243	593
Wangaratta	VIC	11.1%	30,002	3,321
Warrnambool	VIC	11.6%	35,907	4,157
Wellington	VIC	11.6%	46,124	5,340
West Wimmera	VIC	10.0%	3,933	395
Whitehorse	VIC	6.1%	178,639	10,923
Whittlesea	VIC	8.9%	245,029	21,892
Wodonga	VIC	12.1%	44,276	5,365
Wyndham	VIC	7.5%	324,087	24,148
Yarra	VIC	7.8%	97,448	7,606
Yarra Ranges	VIC	7.9%	158,694	12,483
Yarriambiack	VIC	15.7%	6,389	1,003
Unincorporated Vic	VIC	3.1%	953	30

Aurukun	QLD	49.7%	1,154	573
Balonne	QLD	10.0%	4,345	436
Banana	QLD	7.8%	14,919	1,159
Barcaldine	QLD	6.7%	2,894	195
Barcoo	QLD	3.2%	317	10
Blackall-Tambo	QLD	9.3%	1,953	182
Boulia	QLD	9.4%	478	45
Brisbane	QLD	7.0%	1,323,162	92,521
Bulloo	QLD	2.9%	346	10
Bundaberg	QLD	14.9%	104,166	15,503
Burdekin	QLD	10.5%	17,020	1,789
Burke	QLD	8.0%	438	35
Cairns	QLD	10.9%	175,398	19,188
Carpentaria	QLD	17.8%	2,212	394
Cassowary Coast	QLD	13.1%	29,972	3,924
Central Highlands (Qld)	QLD	7.5%	28,973	2,159
Charters Towers	QLD	11.6%	12,013	1,396
Cherbourg	QLD	35.9%	1,264	454
Cloncurry	QLD	7.6%	3,851	294
Cook	QLD	15.8%	4,761	751
Croydon	QLD	9.3%	270	25
Diamantina	QLD	5.5%	272	15
Doomadgee	QLD	32.3%	1,461	472
Douglas	QLD	12.1%	12,828	1,555
Etheridge	QLD	6.9%	726	50
Flinders (Qld)	QLD	9.7%	1,544	150
Fraser Coast	QLD	15.7%	117,940	18,463
Gladstone	QLD	12.2%	66,835	8,168
Gold Coast	QLD	7.7%	666,087	51,331
Goondiwindi	QLD	9.5%	10,452	997
Gympie	QLD	15.9%	56,166	8,923
Hinchinbrook	QLD	12.2%	11,118	1,352
Hope Vale	QLD	36.4%	1,026	373
Ipswich	QLD	11.6%	251,148	29,206
Isaac	QLD	4.0%	23,024	912
Kowanyama	QLD	35.6%	1,147	408
Livingstone	QLD	7.9%	41,906	3,319
Lockhart River	QLD	20.8%	673	140
Lockyer Valley	QLD	11.7%	43,847	5,120
Logan	QLD	11.5%	377,773	43,356
Longreach	QLD	8.3%	3,737	311
Mackay	QLD	8.6%	126,907	10,887
McKinlay	QLD	4.7%	849	40
Mapoon	QLD	11.0%	465	51
Maranoa	QLD	8.6%	13,255	1,135
Mareeba	QLD	13.9%	23,702	3,298
Moreton Bay	QLD	10.0%	510,104	51,009
Mornington	QLD	27.2%	1,079	293
Mount Isa	QLD	11.3%	18,945	2,149
Murweh	QLD	13.4%	3,966	532
Napranum	QLD	31.6%	924	292
Noosa	QLD	7.5%	58,367	4,365
North Burnett	QLD	14.3%	10,352	1,483

Northern Peninsula Area	QLD	15.6%	2,908	455
Palm Island	QLD	35.6%	2,214	788
Paroo	QLD	17.0%	1,725	293
Pormpuraaw	QLD	36.6%	644	236
Quilpie	QLD	12.1%	709	86
Redland	QLD	8.6%	166,809	14,393
Richmond	QLD	5.1%	781	40
Rockhampton	QLD	13.6%	84,517	11,469
Scenic Rim	QLD	10.1%	45,248	4,580
Somerset	QLD	13.3%	26,251	3,492
South Burnett	QLD	17.4%	34,290	5,950
Southern Downs	QLD	12.8%	37,444	4,807
Sunshine Coast	QLD	8.3%	365,942	30,320
Tablelands	QLD	12.1%	27,259	3,295
Toowoomba	QLD	10.8%	181,821	19,675
Torres	QLD	13.2%	3,502	462
Torres Strait Island	QLD	17.5%	4,286	751
Townsville	QLD	11.0%	201,433	22,211
Weipa	QLD	4.1%	4,251	174
Western Downs	QLD	12.7%	34,991	4,453
Whitsunday	QLD	8.7%	39,712	3,437
Winton	QLD	6.9%	1,138	79
Woorabinda	QLD	33.7%	1,081	364
Wujal Wujal	QLD	49.5%	293	145
Yarrabah	QLD	37.2%	2,640	982
Adelaide	SA	12.2%	27,901	3,405
Adelaide Hills (DC)	SA	5.1%	41,842	2,119
Adelaide Plains (DC)	SA	11.1%	10,932	1,213
Alexandrina (DC)	SA	10.8%	30,323	3,263
Anangu Pitjantjatjara (AC)	SA	27.7%	2,632	729
Barossa (DC)	SA	8.1%	26,268	2,124
Barunga West (DC)	SA	13.4%	2,680	358
Berri and Barmera (DC)	SA	16.3%	10,730	1,751
Burnside	SA	4.8%	47,444	2,276
Campbelltown (SA)	SA	7.8%	57,160	4,459
Ceduna (DC)	SA	14.5%	3,717	540
Charles Sturt	SA	10.2%	127,440	12,957
Clare and Gilbert Valleys (DC)	SA	8.7%	9,405	822
Cleve (DC)	SA	8.9%	1,757	156
Cooper Pedy (DC)	SA	31.2%	1,550	484
Copper Coast (DC)	SA	14.9%	15,951	2,371
Elliston (DC)	SA	11.8%	1,041	123
Flinders Ranges (DC)	SA	11.7%	1,673	195
Franklin Harbour (DC)	SA	7.8%	1,332	104
Gawler	SA	13.5%	26,789	3,629
Goyder (DC)	SA	15.9%	4,132	655
Grant (DC)	SA	6.9%	9,044	627
Holdfast Bay	SA	7.5%	38,766	2,890
Kangaroo Island (DC)	SA	8.4%	5,125	430
Karoonda East Murray (DC)	SA	14.0%	1,016	142
Kimba (DC)	SA	6.6%	1,059	70
Kingston (DC) (SA)	SA	8.7%	2,393	209
Light (RegC)	SA	8.9%	16,616	1,476

Lower Eyre Peninsula (DC)	SA	6.9%	6,154	425
Loxton Waikerie (DC)	SA	11.9%	11,897	1,419
Maralinga Tjarutja (AC)	SA	34.3%	102	35
Marion	SA	10.7%	98,493	10,570
Mid Murray (DC)	SA	15.2%	9,496	1,446
Mitcham	SA	6.4%	69,542	4,423
Mount Barker (DC)	SA	8.4%	42,297	3,554
Mount Gambier	SA	13.8%	27,846	3,840
Mount Remarkable (DC)	SA	11.3%	2,897	328
Murray Bridge (RC)	SA	15.9%	22,901	3,631
Naracoorte and Lucindale (DC)	SA	7.2%	8,928	643
Northern Areas (DC)	SA	10.7%	4,667	501
Norwood Payneham St Peters	SA	6.7%	39,312	2,642
Onkaparinga	SA	12.2%	180,865	21,989
Orroroo/Carrieton (DC)	SA	9.7%	889	86
Peterborough (DC)	SA	25.8%	1,683	435
Playford	SA	19.5%	107,069	20,850
Port Adelaide Enfield	SA	13.1%	138,585	18,222
Port Augusta	SA	17.1%	14,420	2,470
Port Lincoln	SA	13.6%	15,018	2,036
Port Pirie City and Dists	SA	18.8%	17,602	3,314
Prospect	SA	6.9%	23,137	1,592
Renmark Paringa (DC)	SA	12.4%	10,107	1,250
Robe (DC)	SA	4.5%	1,603	72
Roxby Downs	SA	3.1%	4,113	126
Salisbury	SA	14.5%	149,214	21,662
Southern Mallee (DC)	SA	9.4%	2,012	189
Streaky Bay (DC)	SA	7.8%	2,278	177
Tatiara (DC)	SA	5.8%	7,066	413
Tea Tree Gully	SA	8.4%	103,685	8,681
The Coorong (DC)	SA	12.8%	5,612	719
Tumby Bay (DC)	SA	9.4%	2,906	272
Unley	SA	6.0%	39,929	2,395
Victor Harbor	SA	11.7%	16,869	1,971
Wakefield (DC)	SA	14.4%	6,958	1,001
Walkerville	SA	6.4%	8,420	535
Wattle Range (DC)	SA	12.5%	12,257	1,537
West Torrens	SA	8.7%	64,519	5,612
Whyalla	SA	18.4%	21,902	4,023
Wudinna (DC)	SA	8.5%	1,161	99
Yankalilla (DC)	SA	11.1%	6,100	680
Yorke Peninsula (DC)	SA	12.1%	12,040	1,455
Unincorporated SA	SA	18.6%	3,015	560
Albany	WA	9.7%	40,949	3,982
Armadale	WA	8.8%	105,094	9,234
Ashburton	WA	3.3%	8,076	264
Augusta-Margaret River	WA	6.1%	18,620	1,132
Bassendean	WA	9.8%	16,914	1,666
Bayswater	WA	7.3%	74,283	5,412
Belmont	WA	8.5%	45,976	3,924
Beverley	WA	12.8%	1,768	226
Boddington	WA	7.7%	1,786	138
Boyup Brook	WA	6.5%	1,948	126

Bridgetown-Greenbushes	WA	9.2%	5,669	522
Brookton	WA	12.5%	955	119
Broome	WA	13.7%	18,611	2,556
Broomehill-Tambellup	WA	13.1%	1,095	143
Bruce Rock	WA	9.4%	1,043	98
Bunbury	WA	11.8%	34,768	4,098
Busselton	WA	7.0%	43,969	3,074
Cambridge	WA	2.9%	31,133	905
Canning	WA	6.5%	103,691	6,768
Capel	WA	6.9%	19,335	1,333
Carnamah	WA	10.4%	579	60
Carnarvon	WA	15.0%	5,528	827
Chapman Valley	WA	6.4%	1,663	106
Chittering	WA	4.9%	6,516	321
Claremont	WA	4.2%	12,178	507
Cockburn	WA	6.8%	130,282	8,914
Collie	WA	13.2%	9,295	1,225
Coolgardie	WA	11.1%	3,686	408
Coorow	WA	10.1%	1,107	112
Corrigin	WA	8.6%	1,029	88
Cottesloe	WA	2.5%	8,695	219
Cranbrook	WA	9.8%	1,149	113
Cuballing	WA	10.1%	951	96
Cue	WA	15.2%	231	35
Cunderdin	WA	9.4%	1,322	124
Dalwallinu	WA	5.3%	1,446	77
Dandaragan	WA	6.9%	3,748	258
Dardanup	WA	6.6%	15,685	1,037
Denmark	WA	7.8%	6,618	518
Derby-West Kimberley	WA	27.5%	8,433	2,318
Donnybrook-Balingup	WA	8.5%	6,438	545
Dowerin	WA	6.8%	738	50
Dumbleyung	WA	7.8%	701	55
Dundas	WA	21.4%	701	150
East Fremantle	WA	4.0%	8,222	332
East Pilbara	WA	6.5%	10,401	673
Esperance	WA	7.9%	14,547	1,154
Exmouth	WA	5.7%	3,466	198
Fremantle	WA	9.3%	35,157	3,277
Gingin	WA	7.4%	6,064	448
Gnowangerup	WA	10.0%	1,269	127
Goomalling	WA	9.1%	987	90
Gosnells	WA	8.6%	137,355	11,798
Greater Geraldton	WA	11.4%	41,914	4,761
Halls Creek	WA	28.0%	4,136	1,160
Harvey	WA	7.0%	30,790	2,156
Irwin	WA	8.4%	3,842	322
Jerramungup	WA	4.5%	1,213	55
Joondalup	WA	4.9%	169,657	8,379
Kalamunda	WA	6.1%	62,670	3,842
Kalgoorlie/Boulder	WA	7.6%	30,775	2,346
Karratha	WA	6.3%	24,237	1,517
Katanning	WA	11.0%	4,290	474

Kellerberrin	WA	16.2%	1,166	189
Kent	WA	4.8%	524	25
Kojonup	WA	6.9%	1,967	135
Kondinin	WA	7.2%	858	62
Koorda	WA	13.5%	371	50
Kulin	WA	3.1%	794	25
Kwinana	WA	9.6%	52,103	5,006
Lake Grace	WA	3.8%	1,301	49
Laverton	WA	10.4%	1,439	150
Leonora	WA	8.3%	1,732	143
Mandurah	WA	9.6%	99,272	9,540
Manjimup	WA	10.3%	9,438	976
Meekatharra	WA	16.6%	1,294	215
Melville	WA	4.7%	110,426	5,208
Menzies	WA	7.0%	575	40
Merredin	WA	11.3%	3,268	369
Mingenew	WA	6.0%	417	25
Moora	WA	11.7%	2,392	279
Morawa	WA	15.9%	679	108
Mosman Park	WA	5.4%	10,032	541
Mount Magnet	WA	20.3%	701	142
Mount Marshall	WA	7.6%	461	35
Mukinbudin	WA	3.3%	600	20
Mundaring	WA	6.2%	41,421	2,550
Murchison	WA	4.7%	106	5
Murray	WA	9.2%	19,823	1,831
Nannup	WA	9.0%	1,632	147
Narembeen	WA	4.2%	833	35
Narrogin	WA	11.4%	4,983	568
Nedlands	WA	4.0%	24,127	962
Ngaanyatjarraku	WA	110.1%	1,479	1,628
Northam	WA	13.0%	12,193	1,581
Northampton	WA	10.5%	3,369	355
Nungarin	WA	13.7%	256	35
Peppermint Grove	WA	2.4%	1,736	41
Perenjori	WA	3.9%	649	25
Perth	WA	8.3%	32,856	2,714
Pingelly	WA	18.4%	1,084	199
Plantagenet	WA	10.9%	5,669	616
Port Hedland	WA	8.7%	17,247	1,502
Quairading	WA	14.8%	973	144
Ravensthorpe	WA	6.5%	2,277	148
Rockingham	WA	8.1%	148,822	12,005
Sandstone	WA	8.6%	116	10
Serpentine-Jarrahdale	WA	5.2%	36,739	1,898
Shark Bay	WA	6.2%	1,129	70
South Perth	WA	5.5%	46,701	2,558
Stirling	WA	6.8%	243,871	16,603
Subiaco	WA	4.9%	18,870	923
Swan	WA	8.4%	171,588	14,413
Tammin	WA	12.4%	404	50
Three Springs	WA	7.6%	593	45
Toodyay	WA	8.7%	4,954	430

Trayning	WA	18.2%	303	55
Upper Gascoyne	WA	7.5%	201	15
Victoria Park	WA	7.7%	40,782	3,132
Victoria Plains	WA	6.8%	824	56
Vincent	WA	5.7%	40,125	2,272
Wagin	WA	10.5%	1,816	191
Wandering	WA	5.5%	545	30
Wanneroo	WA	7.3%	229,438	16,852
Warooka	WA	10.3%	4,457	458
West Arthur	WA	7.0%	787	55
Westonia	WA	6.1%	244	15
Wickepin	WA	10.4%	701	73
Williams	WA	4.4%	1,060	47
Wiluna	WA	19.5%	568	111
Wongan-Ballidu	WA	10.0%	1,336	134
Woodanilling	WA	9.4%	479	45
Wyalkatchem	WA	16.7%	491	82
Wyndham-East Kimberley	WA	17.2%	8,209	1,408
Yalgoo	WA	14.0%	357	50
Yilgarn	WA	10.9%	1,198	130
York	WA	11.5%	3,602	413
Break O'Day	TAS	17.7%	7,075	1,255
Brighton	TAS	16.3%	19,998	3,266
Burnie	TAS	15.7%	20,463	3,221
Central Coast (Tas.)	TAS	11.5%	23,331	2,692
Central Highlands (Tas.)	TAS	14.7%	2,595	382
Circular Head	TAS	10.2%	8,352	850
Clarence	TAS	9.5%	63,663	6,058
Derwent Valley	TAS	16.6%	11,341	1,878
Devonport	TAS	15.2%	26,977	4,103
Dorset	TAS	12.6%	7,001	880
Flinders (Tas.)	TAS	10.5%	933	98
George Town	TAS	17.8%	7,330	1,308
Glamorgan/Spring Bay	TAS	10.2%	5,237	532
Glenorchy	TAS	15.2%	50,808	7,719
Hobart	TAS	8.2%	55,964	4,588
Huon Valley	TAS	12.5%	19,454	2,432
Kentish	TAS	12.2%	6,831	833
King Island	TAS	5.0%	1,648	82
Kingborough	TAS	7.4%	41,179	3,028
Latrobe (Tas.)	TAS	9.4%	13,062	1,232
Launceston	TAS	13.3%	71,788	9,518
Meander Valley	TAS	9.5%	21,449	2,040
Northern Midlands	TAS	10.2%	14,279	1,460
Sorell	TAS	10.5%	17,635	1,860
Southern Midlands	TAS	12.4%	6,912	860
Tasman	TAS	15.3%	2,686	411
Waratah/Wynyard	TAS	13.6%	14,767	2,009
West Coast	TAS	18.7%	4,359	816
West Tamar	TAS	9.1%	26,039	2,358